



Midlands Partnership
NHS Foundation Trust
A Keele University Teaching Trust

Overview and Scrutiny Committee

Leek Moorlands District Council - 14th Oct 2020

Jennie Collier – Managing Director of Staffordshire and Stoke-on-Trent Care Group



Responding to COVID-19

- COVID-19 provoked rapid change to NHS services.
- As advised by NHSE/I MPFT temporarily stepped down some of its non-urgent services.
- All services in the Moorlands have now been restored. However, there is some backlog. We are working hard to resolve this.
- To support the health care system MPFT created capacity for COVID-19 positive patients in community hospitals. To date these beds have not been required. This capacity remains in place and will be used only if required for COVID-19 positive patients.

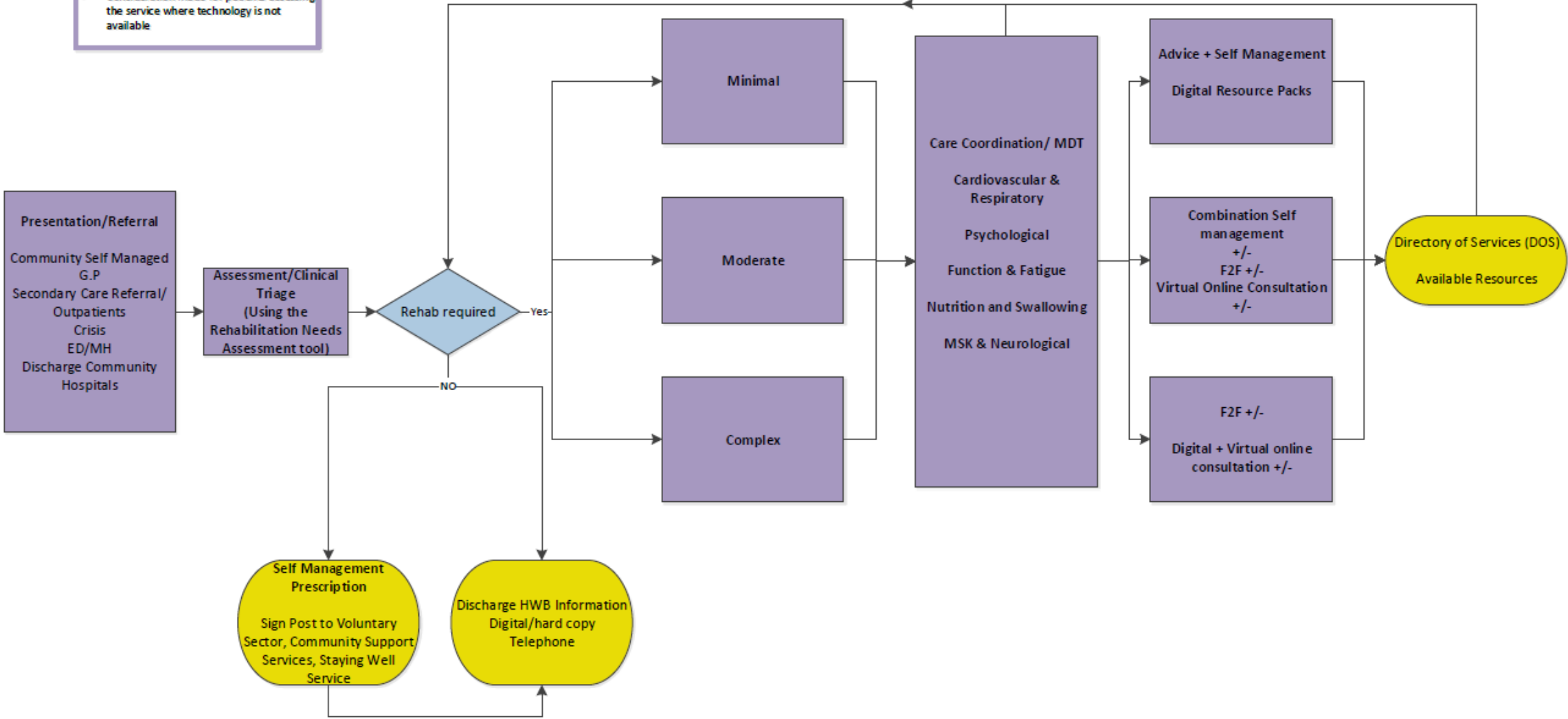
Responding in the Moorlands

- During the pandemic the Community Nursing team in Leek Moorlands worked collaboratively with Park Medical Centre and commissioners.
- Together they assessed the potential risks and unmet needs of patients.
- They focused on providing care to those who needed it most, such as patients at the end of life.
- Together they considered factors such as surge in demand, reduced capacity for face-to-face visits and the difficult clinical decisions which would be required during a time of significant pressure within health care services.
- This enabled professionals to use their skills and experience to deliver **quicker access to care, work more efficiently and remove duplication.**



COVID-19 Rehab

- Principles**
- Holistic Assessment to support the No Wrong Door practice
 - Care coordination delivered by a Multi Disciplinary Team
 - Self help Prescription
 - Consideration made for patients accessing the service where technology is not available



Minor Injuries Unit

- Minor Injuries Unit was temporarily closed in March 2020 based on the low number of people attending the service and staffing challenges.
- Data demonstrates attendance fell month-on-month and had halved by March.
- The Trust is committed to reopening the Minor Injuries Unit when it is safe to do so.
- People in North Staffordshire with minor non life-threatening injury and illness should get treatment from Haywood Hospital Walk-in Centre.
- Anyone with life threatening injury or illness should attend the Emergency Department at Royal Stoke Hospital.

Clinics moving into Leek Moorlands Community Hospital

- A number of clinics are proposing to move from Leek Health Centre into Leek Moorland Community Hospital during October 2020
 - Paediatric Speech & Language Therapy
 - Continence Service
 - Looked After Children
 - Orthoptist (provided by University Hospitals of North Midlands)
- Moves will optimise the outpatient clinics within the hospital and support improved utilisation of estate with the future plans to incorporate services into the hub.

Integrated care in the Moorlands

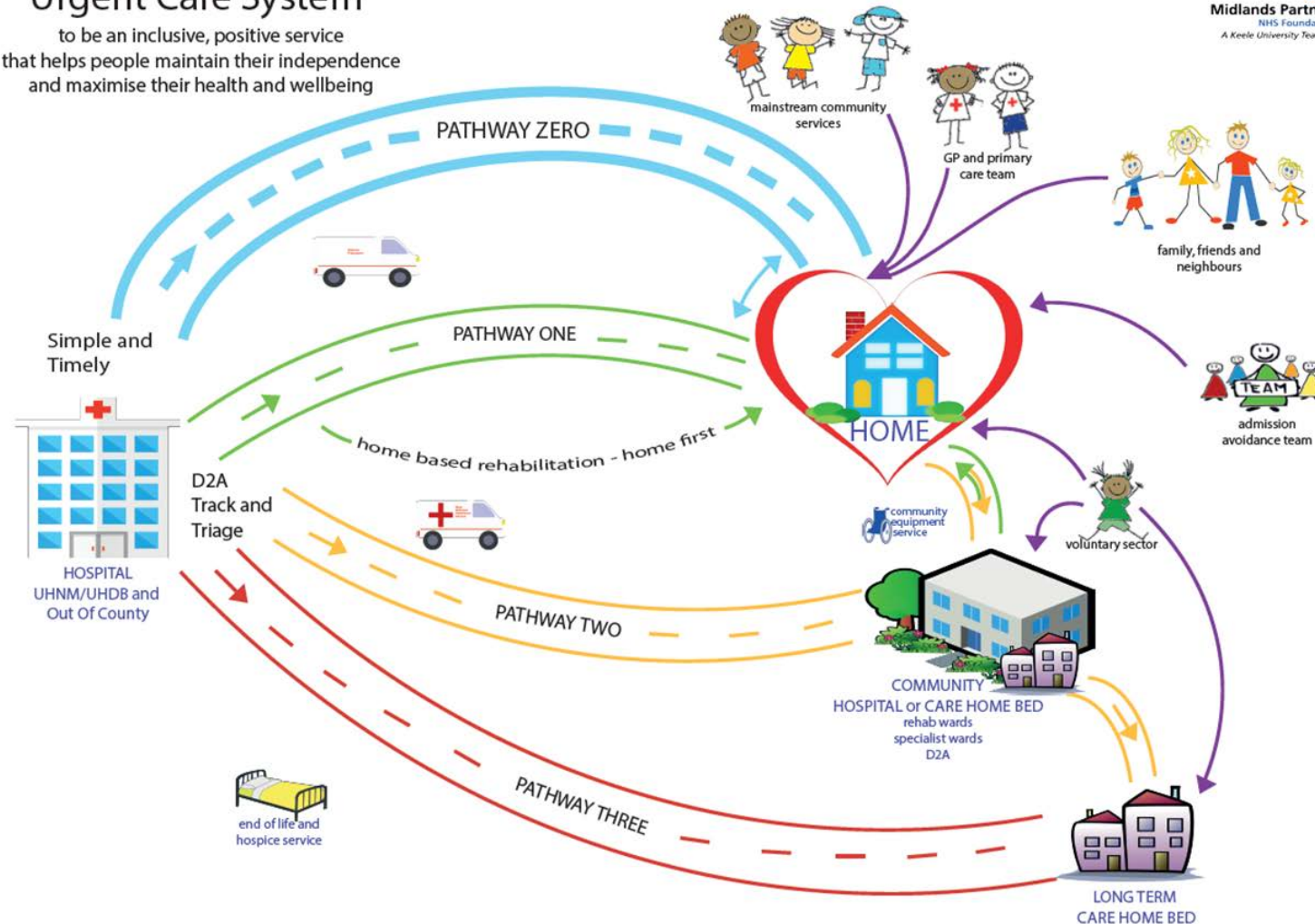


National Hospital Discharge Policy

Urgent Care System

to be an inclusive, positive service that helps people maintain their independence and maximise their health and wellbeing

NHS
Midlands Partnership
NHS Foundation Trust
A Keele University Teaching Trust



Integrated Care Teams in the Moorlands

- Integrated care teams meetings and gold standard framework meetings (for palliative and end of life patients) continue to take place via MS Teams with positive feedback from all partners.
- Plans are in place to implement a named nurse monthly caseload review with each GP practice as well as regular practice manager meetings.



Self-Care Model

- During the COVID-19 pandemic patients were reviewed and prioritised.
- Where appropriated patients were asked to self-manage aspects of their care either independently or in partnership with health care professionals and/or their family/carers.
- Plans are now in place to implement a self-care model which can be used on a range of different patients and care needs.
- Anecdotally there has been a range of benefits including greater independence and increased awareness of overall health and wellbeing.
- The Clinical Director of the PCN is supportive of the self-care model and work to roll the model out across the PCN will begin shortly.

QUESTIONS?

