

Plan for  
**Nature**

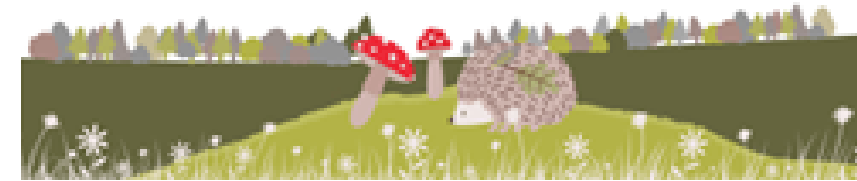


CLIMATE  
CHANGE  
ACTION

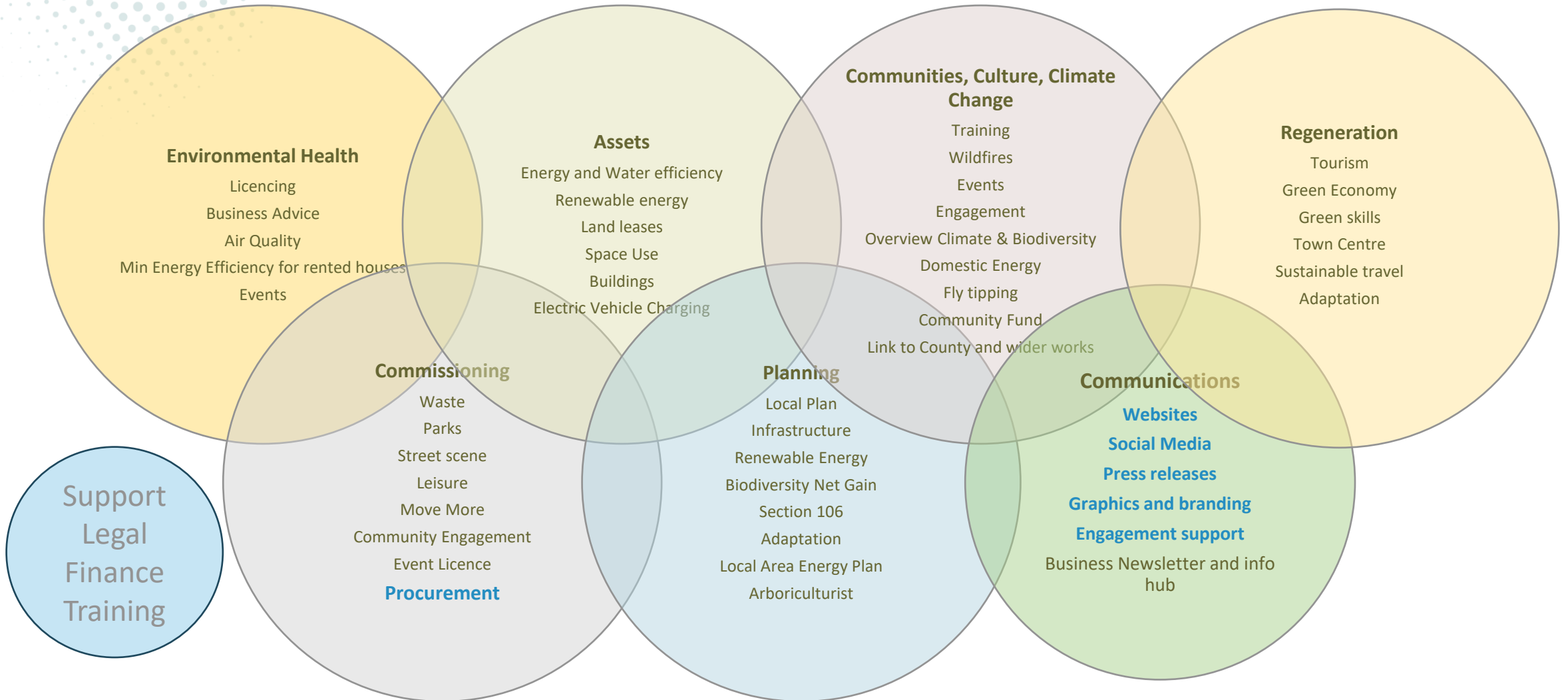


# Climate and Nature Team

- New Director
- Interim Principal Officer
- Climate Change Officer (3 years)
- Biodiversity Officer (1 year)
- Domestic Energy Officer (6 months)
- Other changes to Heads of Service plus additional capacity in engagement on parks, move more, air quality and social housing.



# Climate Change & Biodiversity Delivery Group



# Climate Change Action

- A few highlights



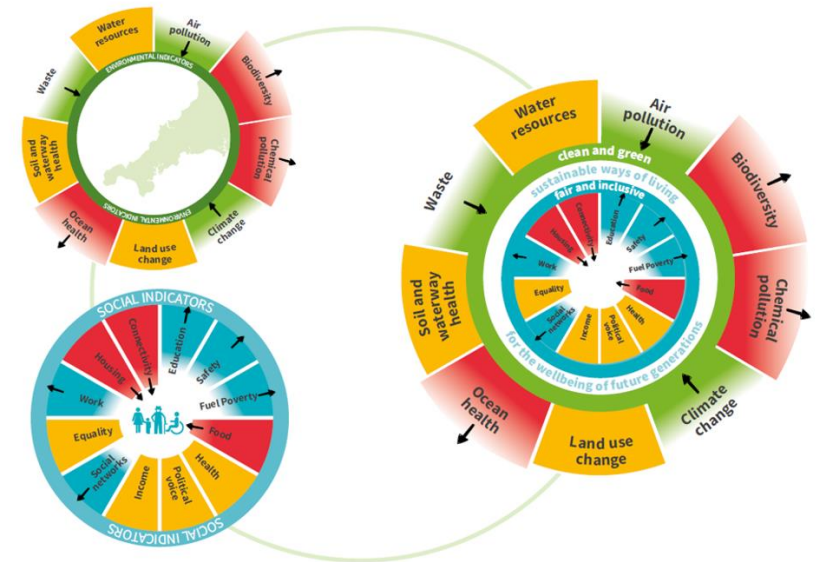
CLIMATE  
CHANGE  
ACTION

# The Way we Work

- EV Salary Sacrifice Scheme – explore charging point options
- Leisure PV and Air Source Heat Pump
- Inclusion of Climate Change and biodiversity on reports
- Induction climate briefing to new councillors using Doughnut Economic principles
- Procurement
- Carbon Literacy training for staff and councillors. Partnerships

Cornwall Decision Wheel

Long Lasting or Extensive Positive Impact	5
Short Term or Limited Positive Impact	4
No Impact or Neutral Impact	3
Short Term or Limited Negative Impact	2
Long Lasting or Severe Negative Impact	1



# Partners

- **Staffordshire County Council**
  - Local Electric Vehicle Infrastructure (LEVI)
  - Climate Change group
  - Adaptation
- **Local Authority Energy Partnership**
  - Adaptation
  - Carbon Literacy
- **Beat the Cold**
  - Fuel Poverty
  - Community Engagement
  - HEAT hub research innovator
- **Staffordshire Warmer Homes**
  - Grant Recipient for energy funding
- **Community Home Solutions**
  - Deliver energy grant programmes
- **Midlands Net Zero Hub**
  - Local rep for Dept of Energy Security and Net Zero
- **Staffordshire Moorlands Green Network**
  - Environmental community groups
  - Links to youth programmes
  - Engagement
- **Support Staffordshire**
  - Climate and Nature Fund
  - Community Energy Fund
  - Staffordshire Green Network
  - Administer green Network

# Make Change Occur

- Climate and Nature Community Fund
  - 40 community action grants provided since 2022
- Communications and engagement
  - High presence on all social media channels, consistent use of branding feel across campaign strands
  - Developed assets and messages to drip feed and keep front of mind
- Support school influence initiatives





# Manage our Waste

- AES – trialling new technologies for fleet
- AES mapping routes for greatest efficiencies
- Preparing for new legislation
- Supporting businesses with new legislation
- Prevent fly tipping
- Comms and Engagement
- Contamination stickers
- Follow waste hierarchy on comms
- Support repair cafes, library of things and circular economy



# Domestic Energy Update – The Way We Live



CLIMATE  
CHANGE  
ACTION

# UK Shared Prosperity Fund – Cost of Living

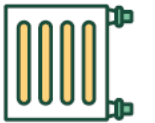
Aims	Target	Actual
People supported	500	373 households 555 people
Households taking up energy efficiency measures	50	340
Organisations receiving grants	3	4
Savings - Annual estimated	n/a	£137,290
Carbon emission reductions - Annual estimated	n/a	524tCO <sub>2</sub> e

Data analysis exercise commissioned to targeted areas with future funding

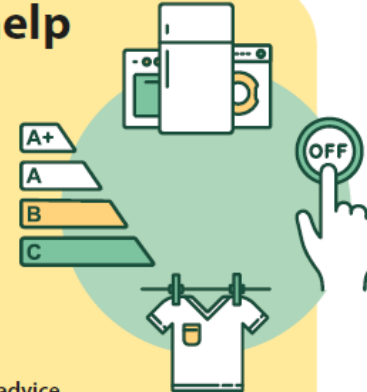


## Top 10 tips to save energy

1. Switch off standby
2. Choose energy efficient appliances
3. Control your lighting
4. Reduce your water use
5. Take control of your heating
6. Get savvy with smart controls
7. Draught-proof your home
8. Upgrade your windows and doors
9. Install insulation
10. Financial support for energy saving measures



## We can help you save energy



Help is at hand for:

- Impartial energy advice
- Getting assessed for grant funding for energy efficiency or energy generating measures
- Accessing a free home visit with tailored advice and some small energy measures
- Support to understand your bill

For more information please scan the QR code or go to:  
[www.staffsmoorlands.gov.uk/Beat-the-Cold](http://www.staffsmoorlands.gov.uk/Beat-the-Cold)  
 Telephone 01782 914 915  
 Email [enquiries@beatcold.org.uk](mailto:enquiries@beatcold.org.uk)  
 Visit <http://www.beatcold.org.uk/>





# Nature and Biodiversity – Key Achievements 2024







# Nature Declaration and Plan for Nature

- We adopted a Nature Recovery Declaration for Staffordshire Moorlands District Council in May 2024.
- Our Plan for Nature (an evidence-based strategy for nature recovery) was the first of its kind in the county and SMDC is in the top 3% of councils\* who have committed to protect and manage 30% of council landholdings for nature recovery by 2030.



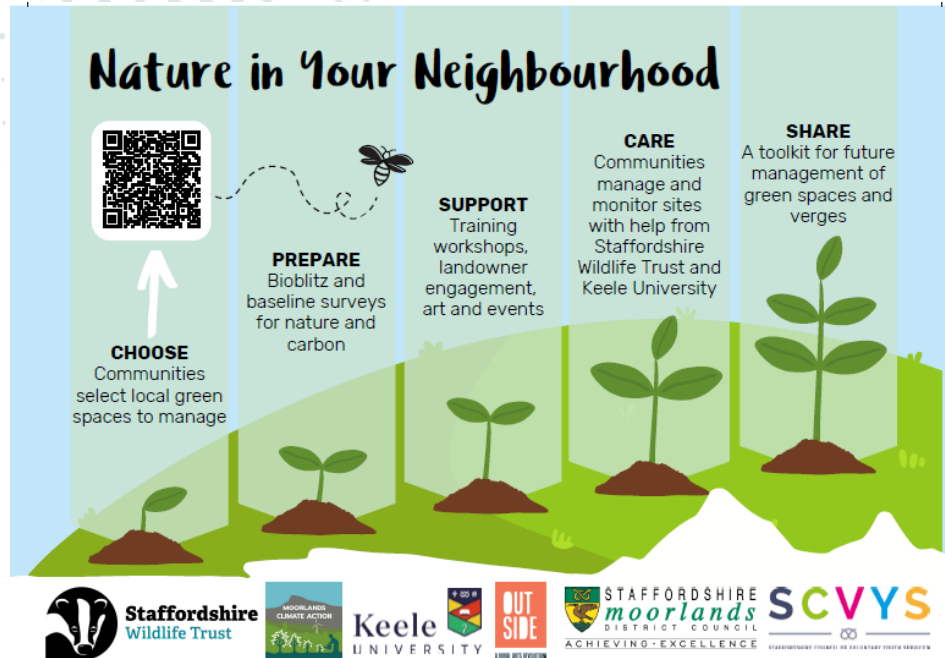
## Nature commitments

	<b>Nature emergency</b>
	Staffordshire Moorlands District Council declared a nature emergency in 2024. ▶ <a href="#">Read the full declaration</a>
	<b>Evidence-based action plan</b>
	Staffordshire Moorlands District Council has committed to develop an evidence-based action plan for pushing nature into recovery.
	<b>Embedded in strategy</b>
	Staffordshire Moorlands District Council has committed to embed nature's recovery into all strategic plans and policy areas.
	<b>30 by 30</b>
	Staffordshire Moorlands District Council has committed to protect and manage 30% of council landholdings for nature recovery by 2030.



- We have launched a comms campaign to publicise our Plan for Nature and small actions people can take at home for nature.

# Partnership working



- We have worked on launching the Nature in Your Neighbourhood partnership project with the Staffordshire Wildlife Trust and other stakeholders.



- We have worked with the County Council as a supporting authority on the Staffordshire Local Nature Recovery Strategy (LNRS), due to launch in Summer 2025.



- We have represented SMDC on the Dove Catchment Partnership.

- We have worked with local community groups on a number of biodiversity and nature initiatives, and awarded grants to many successful community projects through the Staffordshire Moorlands Community Climate and Nature Fund and other funds.



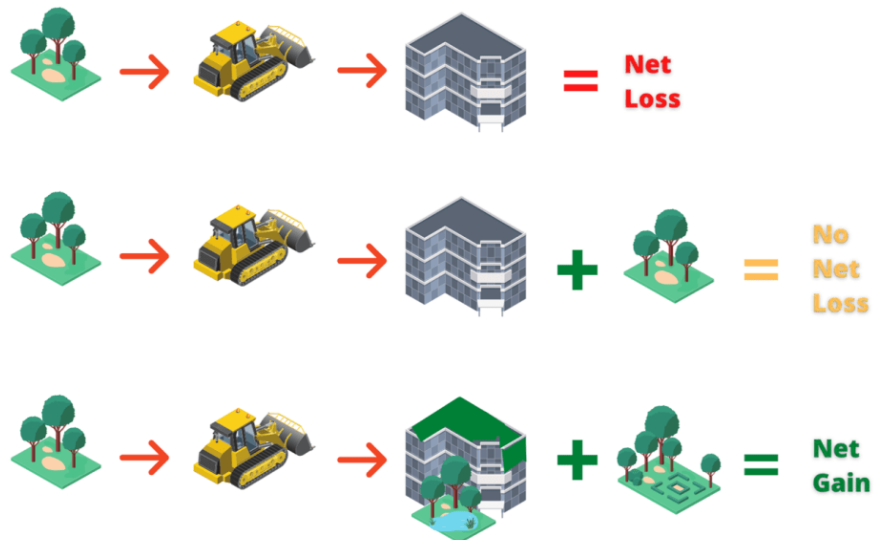
# Cross departmental working



This area is left unmown to promote biodiversity and support wildlife, scan the QR code to find out more.



- Work with the parks department on changes to mowing regimes for improving biodiversity, review of management plans for sites, launch of Green Spaces Strategy.
- Work with the planning department on implementing BNG, exploring habitat bank potential, and working with neighbouring authorities.



# Focus/Emerging Workstreams

## Part 1 direct control

- Fleet strategy and procurement (AES)
- New waste legislation
- Public Sector Decarbonisation Funding
- Procurement tools – New Procurement Act
- Park Management Plan updates
- Mowing regime review
- Carbon Literacy and induction training

## Part 2 district/borough influence

- Local Area Energy Plan (HP only)
- Local Plans Reviews
- Joined up housing strategy and working group
- Housing energy funding – incl Damp and Mould.
- Plan for Nature delivery
- Scope shovel-ready plans
- Local Nature Recovery Strategy (supporting County Council as lead)
- Electric Vehicle infrastructure Strategy (supporting County Council as lead)

- Waste legislation – businesses, Simply Recycling
- Adaptation reporting (Defra)
- Carbon Disclosure Project
- Community engagement and communications
- Continue the Community Climate and Nature Fund
- Biodiversity Net Gain implementation
- Create Tree Strategy
- Partnership work
- **PESTLE for new gov legislation and opportunities**