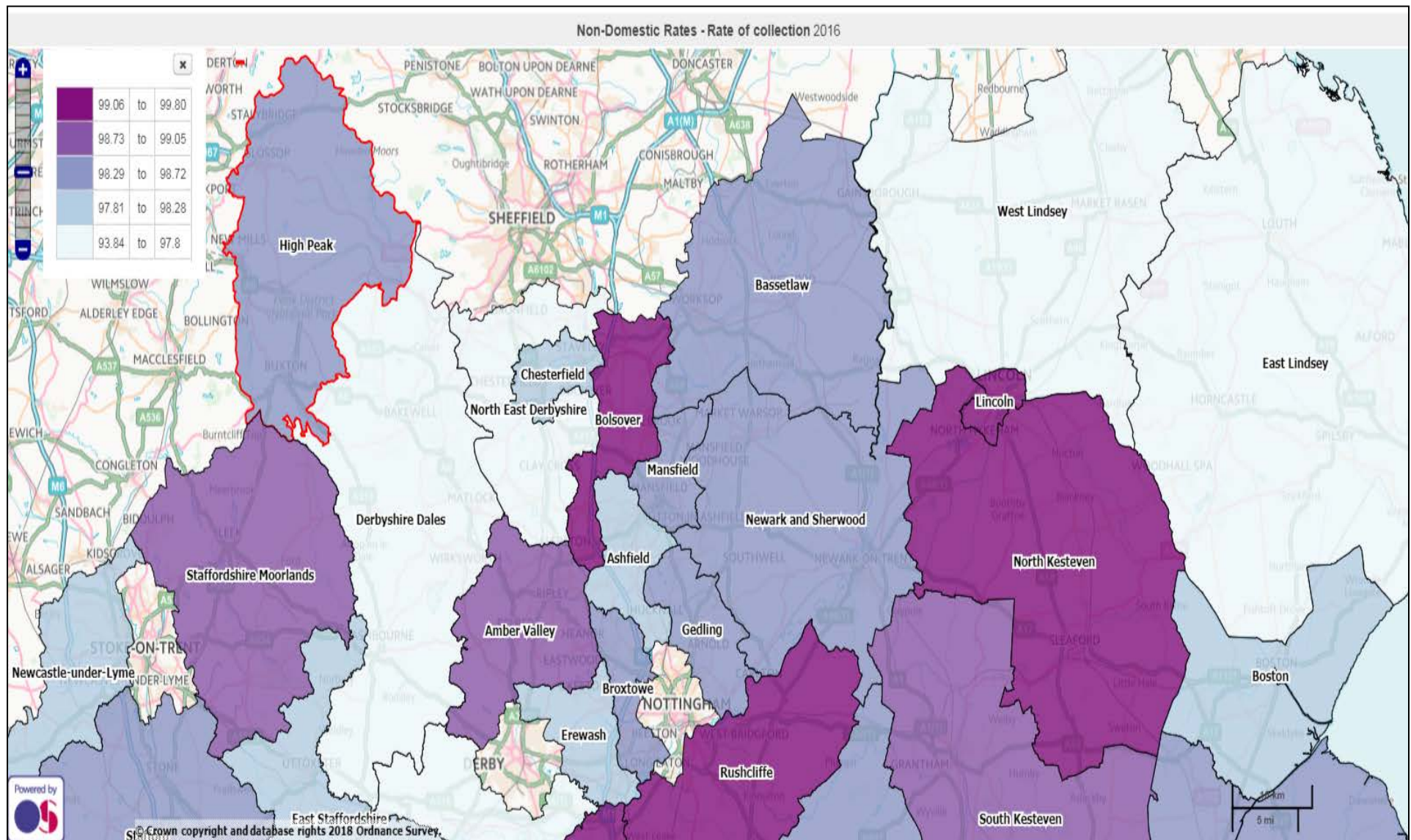


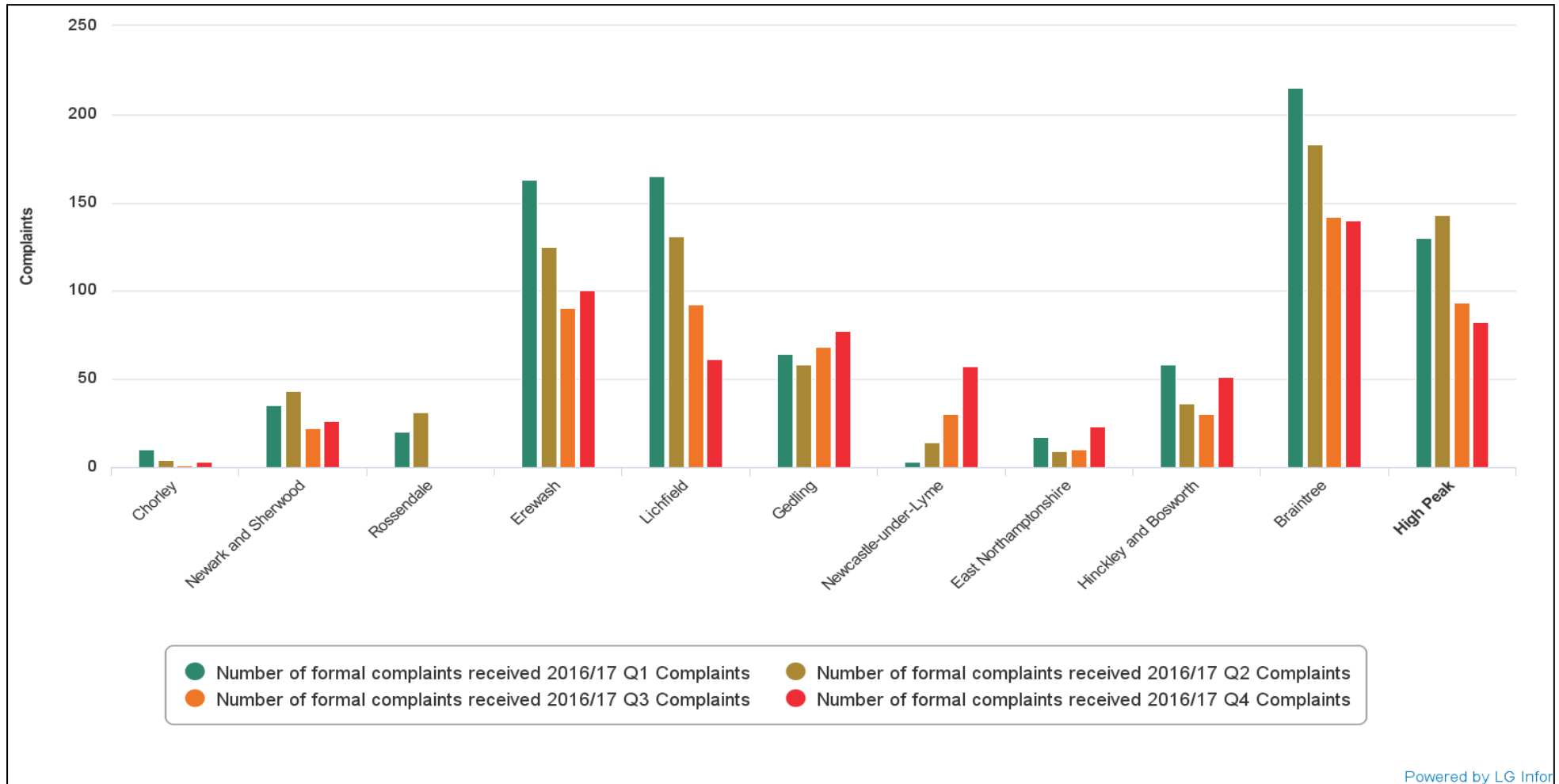


This map shows Non Domestic Tax Collection rate (RO 2016-17) across all English districts. High Peak has an average rate of collection at 98.51%, sitting within the middle 20% of districts nationally. In 2015 -16 the rate of 98.44% also sat in the middle 20%.

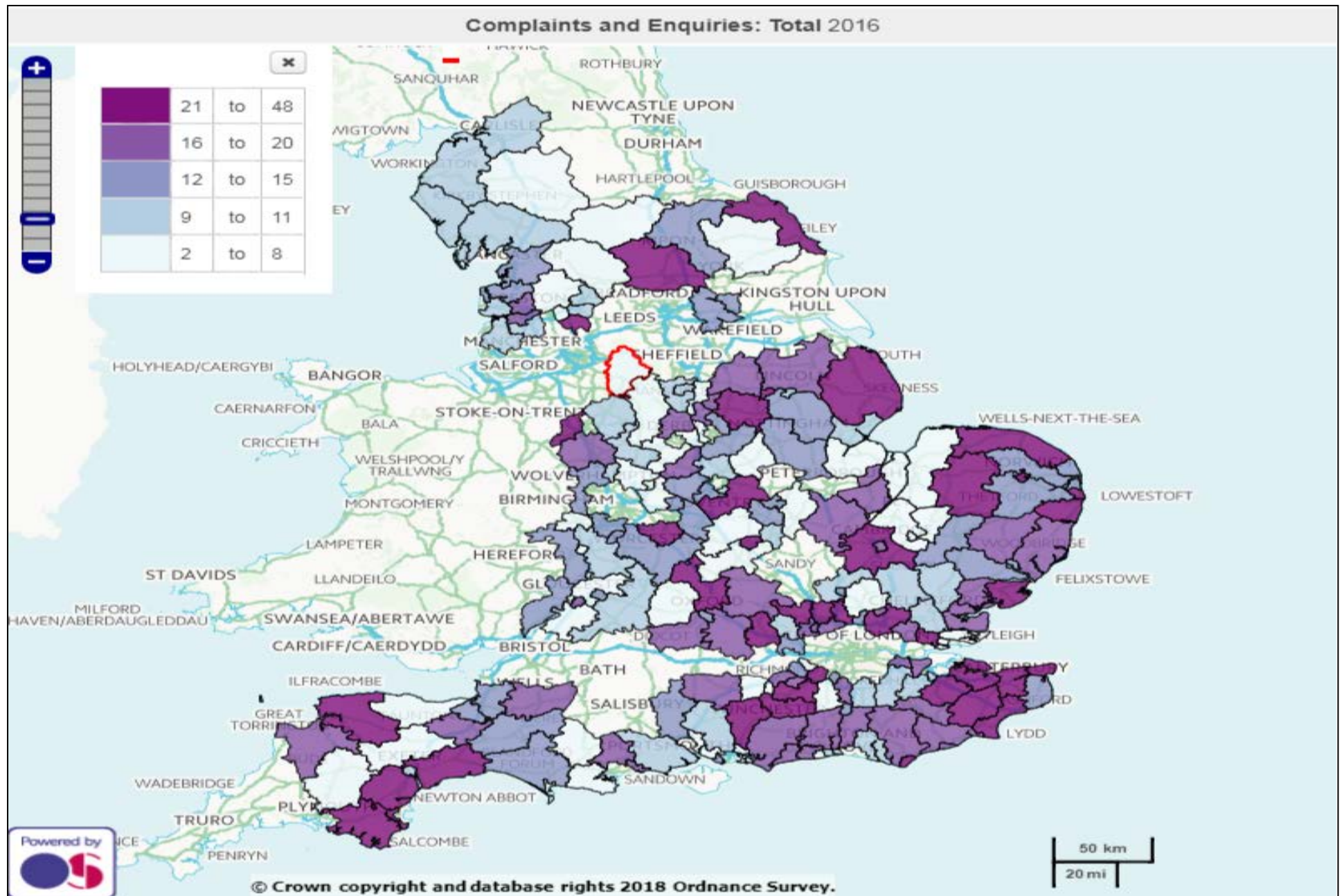


*Ensure our services are easily available to all our residents in the appropriate channels and provided 'right first time'*

The table below has been produced using LG Inform and shows the number of formal complaints from 2016/17 Q1 to 2016/17 Q4 for High Peak and High Peak CIPFA nearest neighbours.



This map produced by Cfol shows the total number of Ombudsman complaints received by English Districts in 2016-17. The High Peak score of 7 is very low compared to the national context, sitting within the bottom 20% of districts.



## A high performing and well motivated workforce

The chart below compares High Peak against CIPFA nearest neighbour and is generated using LG Inform tools. It shows the average number of days lost to sickness for each individual quarter during 2017-18. The figure for the year was 12.16 days against a target of 7 days.

